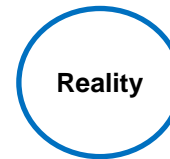




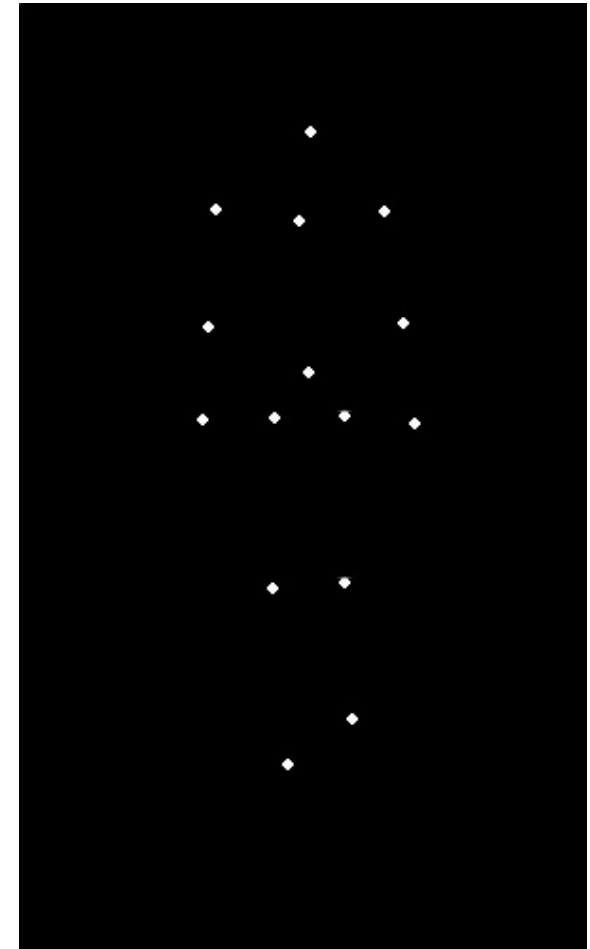
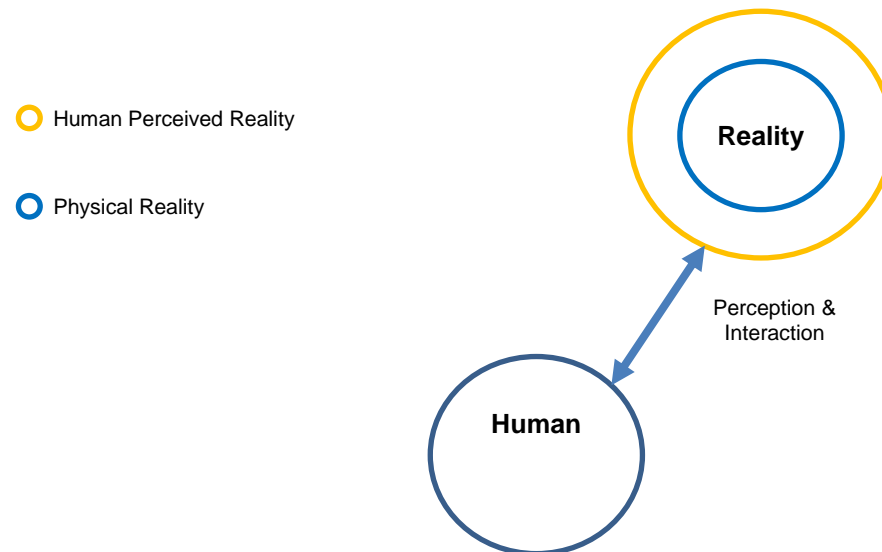
# AI & Models: The Bridge to Ethics & Philosophy

# Models & AI: Relationship Between Humans and AI

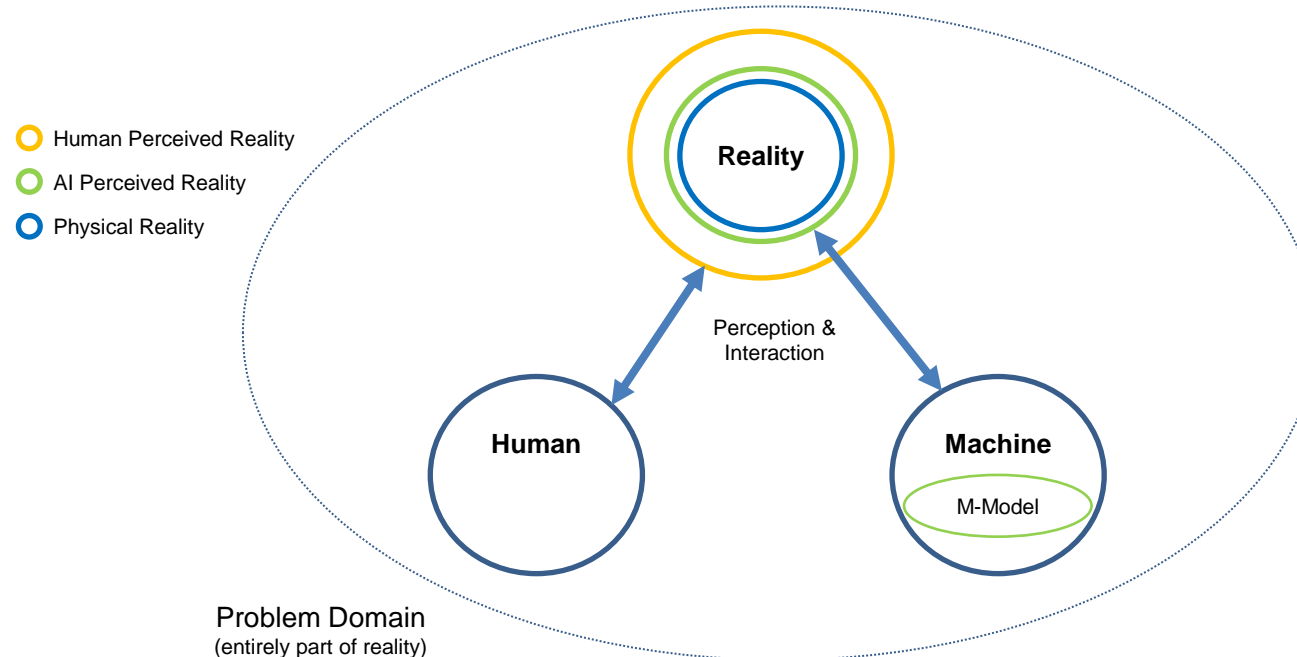


○ Physical Reality

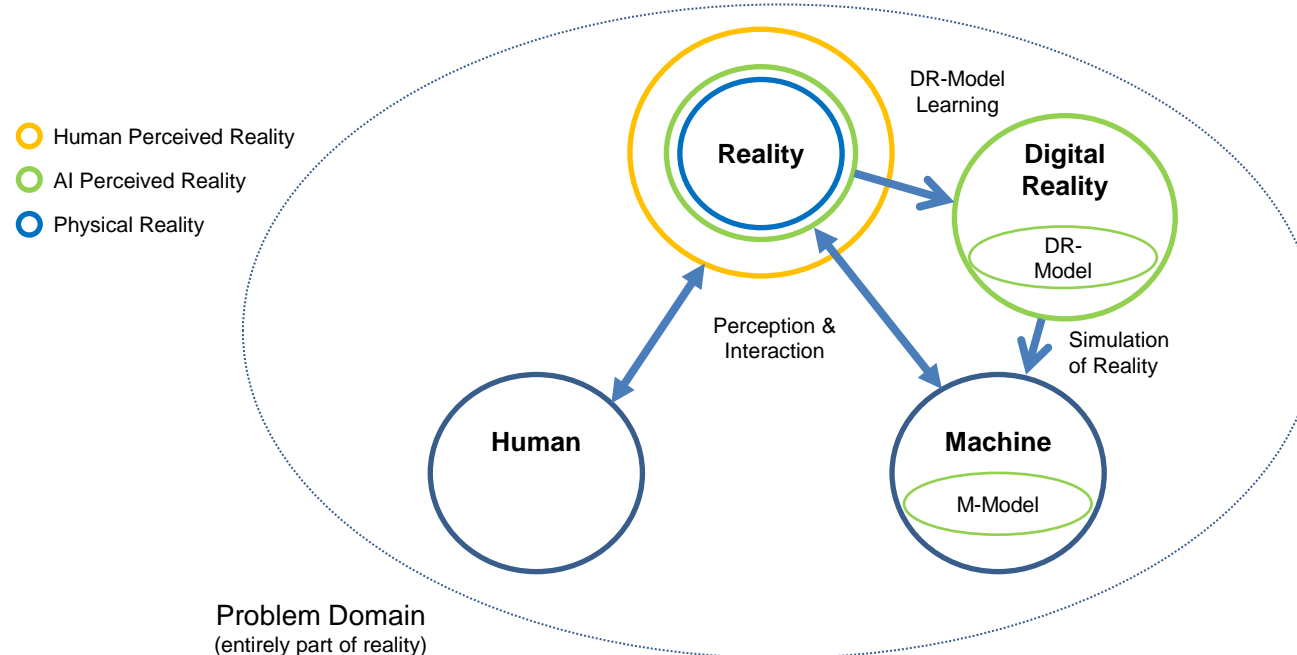
# Models & AI: Relationship Between Humans and AI



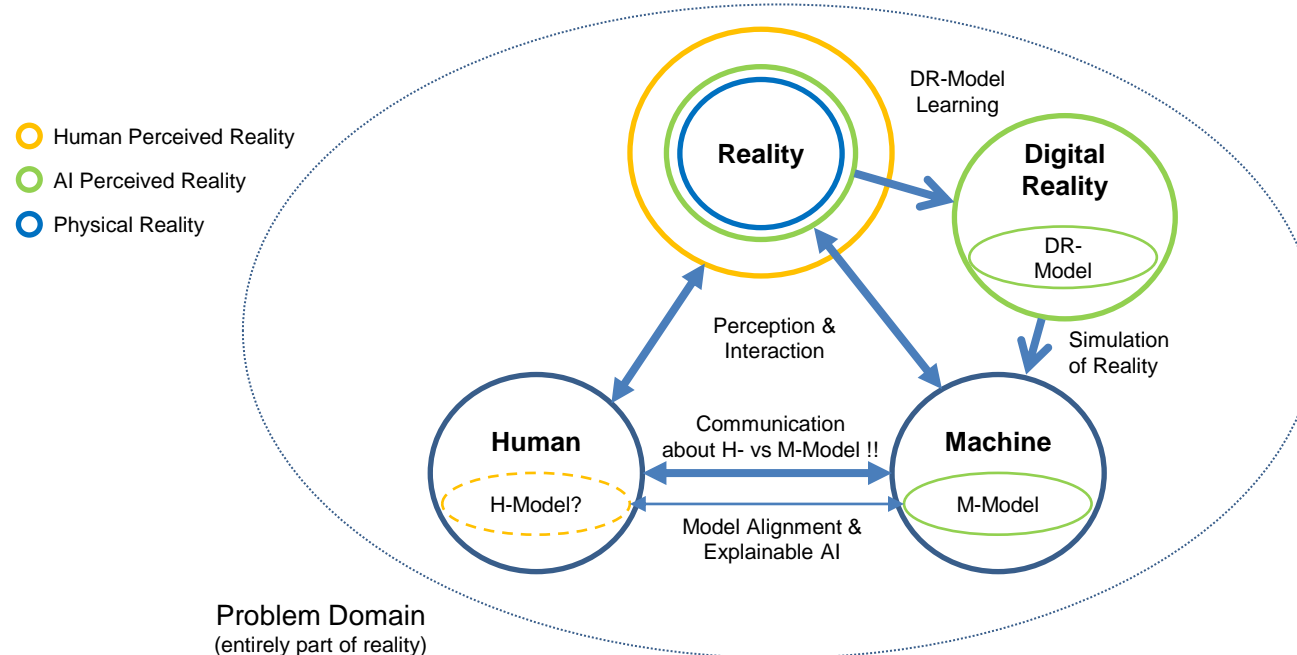
# Models & AI: Relationship Between Humans and AI



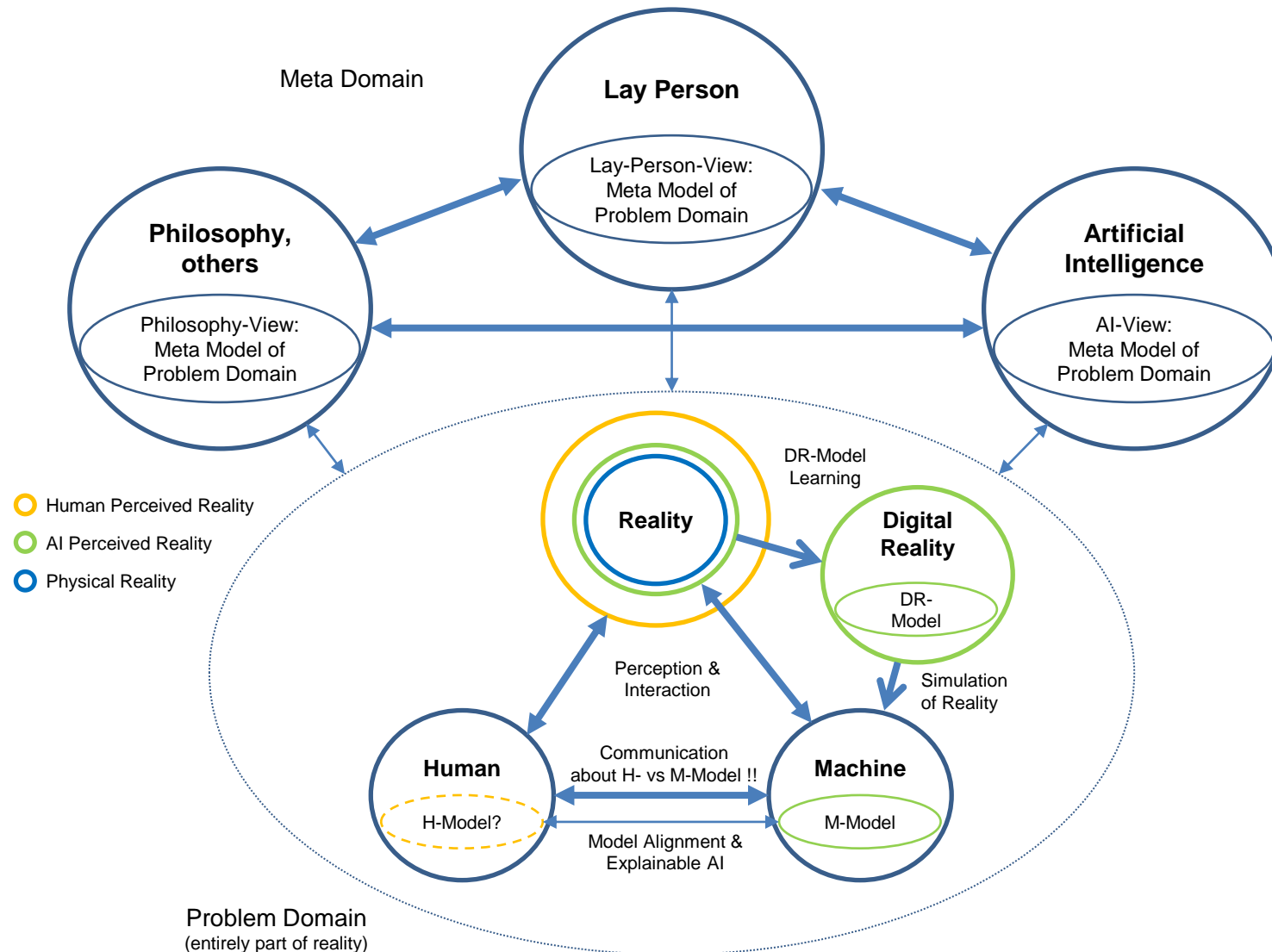
# Models & AI: Relationship Between Humans and AI



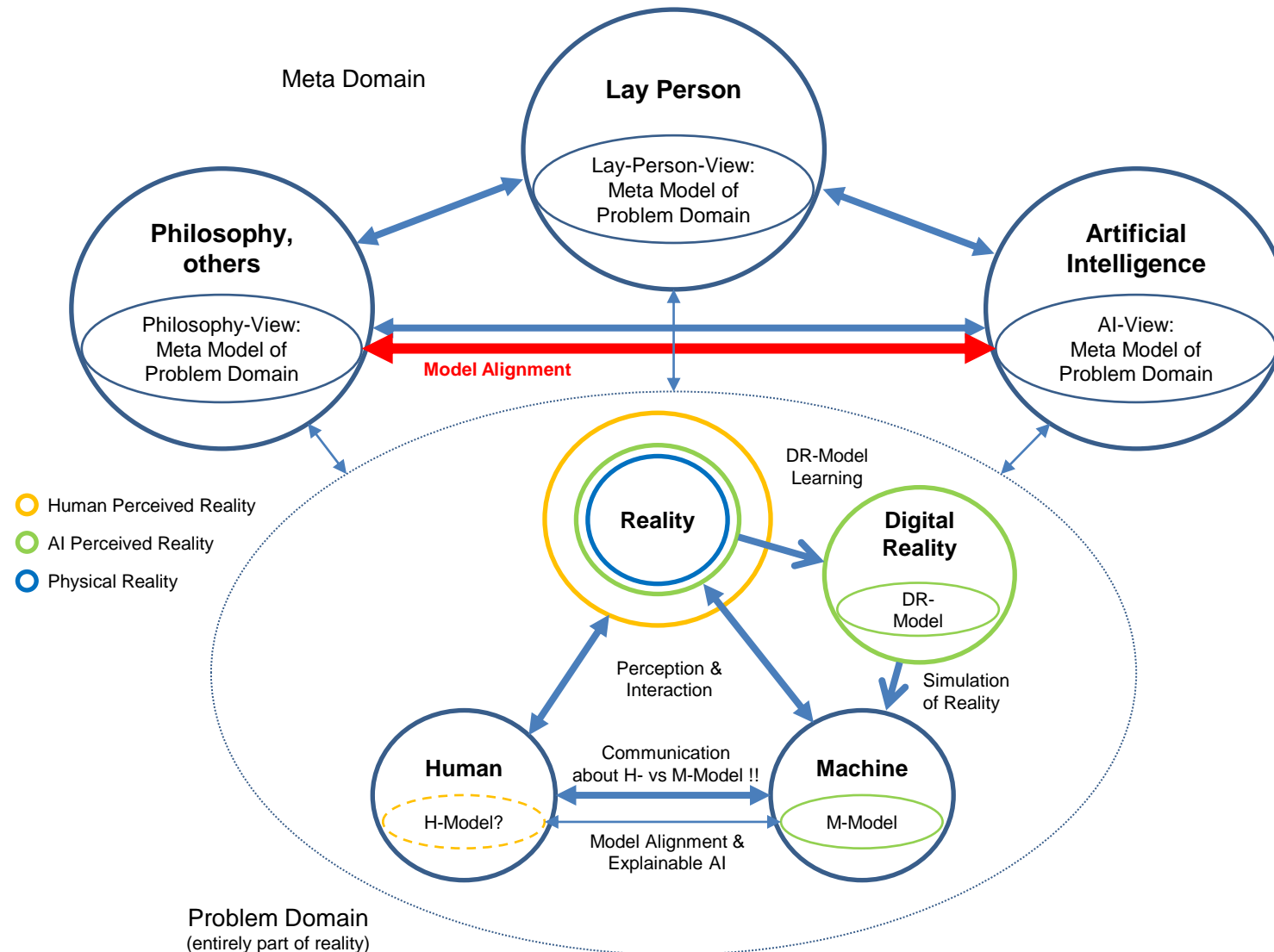
# Models & AI: Relationship Between Humans and AI



# Models & AI: Relationship Between Humans and AI

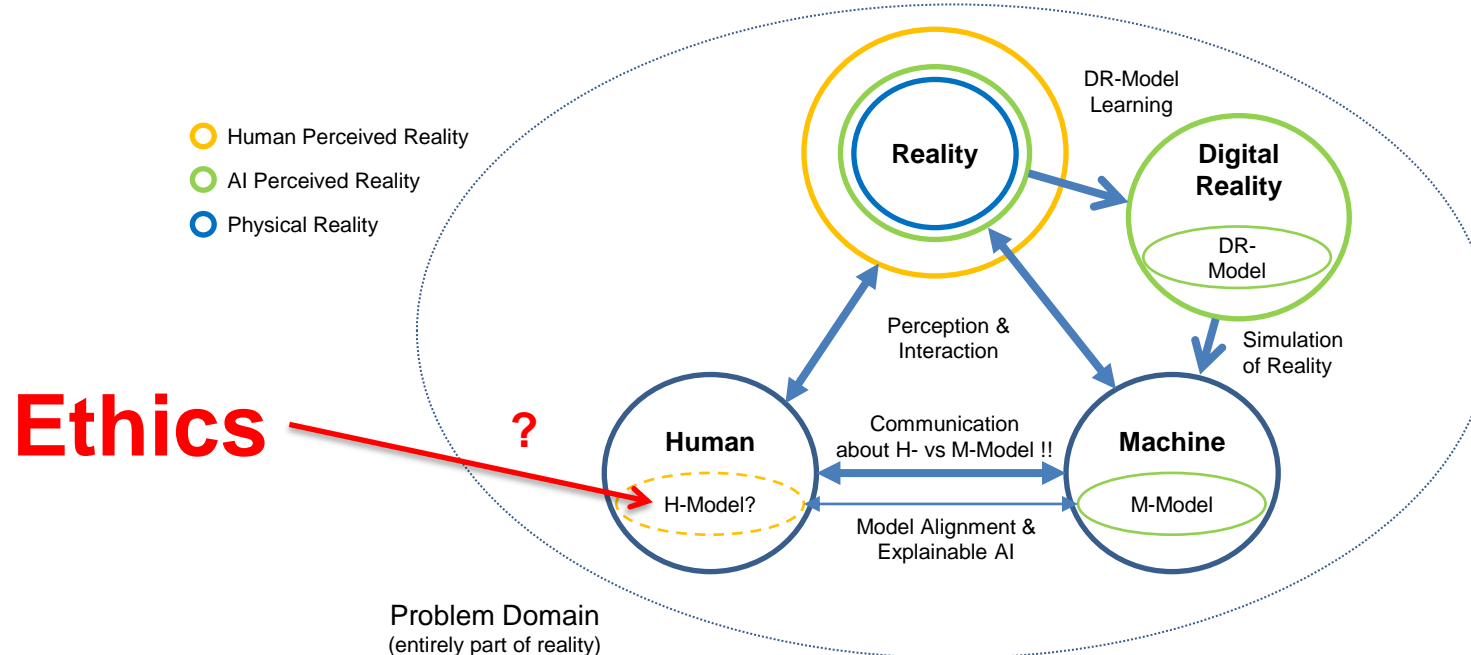


# Models & AI: Relationship Between Humans and AI





# Models & AI: Relationship Between Humans and AI



# Ethics/Morality & AI (Provocative!)

- **Agreement on a Goal**
  - *Wellbeing* of the individual and society [e.g. Sam Harris: The Moral Landscape]
- **Evaluating the (likely) outcome of our actions in reality (with respect to goal)**
  - E.g. by simulation of action with respect to a *model of reality*
- **I argue, this is also what we humans/societies do (at least in a rational setting)**
  - Model might be implicit/emotional (slow & fast thinking [Kahnemann])
- **In principal, AI could/should do the same – but ...**
  - Our models of the world are mediocre (but so were early weather models ...)
  - AI cannot deal with the complexity (yet ...)
  - The metric for evaluation is not clear (but might be a function of the goal ...)

